

OTTAWA COUNTY REAL ESTATE

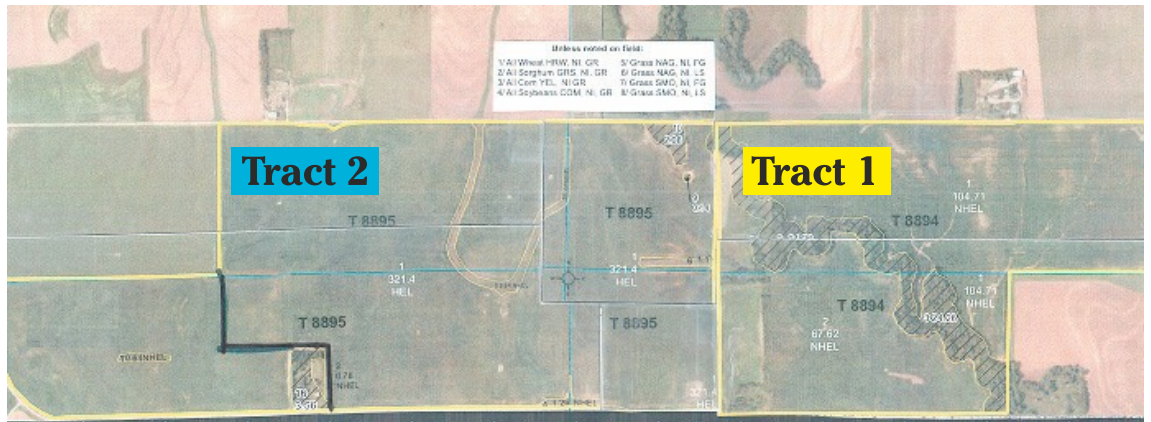
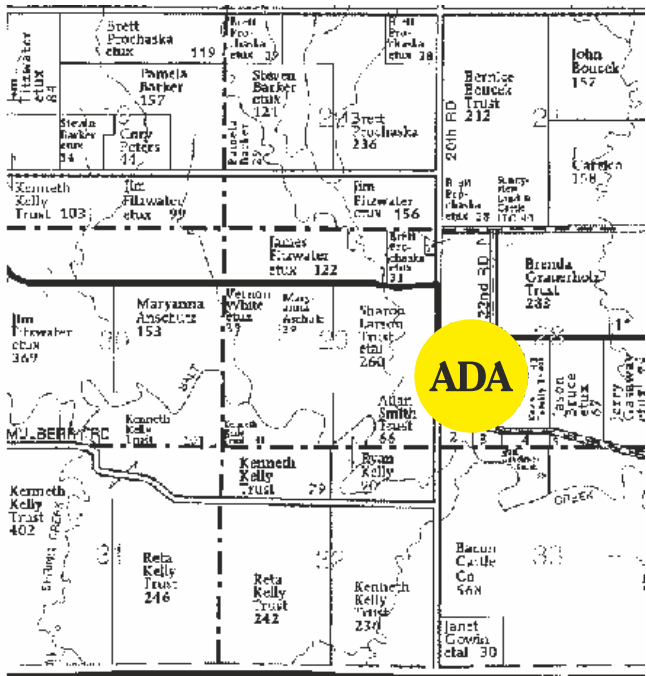
Property is located approximately 2-1/2 miles west of Ada, KS on the north side of Nemaha Rd. (Black top road)



Tract 1: Approx. 172.33 tillable acres. \$3,600.00 per tillable acre.

Tract 2: Approx. 252.8 tillable acres. \$2,950.00 per tillable acre.

Tract 3: House & approx. 6 acres. Has good well & trees. House will need remodeled. **\$40,000.00**



Tract #1: 2018 Yield/Acre
Soybeans - 48.0 bushels (North)
Soybeans - 61.0 bushels (South)

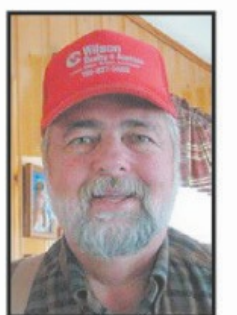
Tract #2: 2018 Yield /Acre
Sorghum - 69.0 bushels
Soybeans - 44.0 bushels
Wheat - 44.0 bushels

Legal description to be determined by Title Company. Property taxes will be re-evaluated and prorated by the Ottawa County Appraiser/Treasurer's Office.



Wilson Realty & Auction Service

P.O. BOX 1305, SALINA, KS 67401 • (785) 827-5563
LONNIE WILSON - OWNER/BROKER/AUCTIONEER • (785) 826-7800
DAVE HUNT - SALES MANAGER • (785) 201-5257
CAROLYN HUTCHINS - OFFICE MANAGER • (785) 823-1177



Lonnie Wilson

Website & Contact Email Addresses: www.soldbywilson.com